

SUNSEEKER PREDATOR 82



M/Y MIJAX

DETAILS

MANUFACTURER	SUNSEEKER
TYPE	PREDATOR 82
LOCATION	BALTIC SEA, GERMANY
LENGTH	24.97 M
BEAM	6 M
DRAFT	1.73 M
HULL MATERIAL	GRP
TRANSMISSION	SHAFT DRIVE
ENGINES	2X MTU V12 2000 M93 1800 PS
ENGINE HOURS	CA. 2100 HRS.
MAX. SPEED	35 KN
CRUISING SPEED	26 KN
FUEL CAPACITY	5,900 L
WATER CAPACITY	2,000L
CABINS	4
BATHROOMS	4
CREW CABINS	1
ASKING PRICE	€850,000 (EU TAX PAID)

DESCRIPTION

The Sunseeker Predator 82 combines sporty design with generous interior and exterior space and a high level of comfort on board. The yacht is in very good condition, is second-hand and has been used exclusively for private purposes and never chartered.

The electrically operated hardtop sliding roof provides plenty of natural light in the saloon. Outside, the yacht offers generous sunbathing areas at the bow and on the aft deck, as well as an ice maker and a newly installed Gaggenau grill. At the stern, a hydraulic garage provides space for a tender or jet ski.

The interior layout accommodates up to eight guests in four cabins, including a full-beam owner's cabin, a VIP cabin, a double cabin and a twin cabin.

Extensive investments have recently been made: a SIMRAD navigation system with a large glass cockpit, has been retrofitted. In addition, navigation equipment including plotter, radar and autopilot was renewed in 2025, a Post Marine heating system (28 kW) was installed in 2024, and the teak deck as well as interior and exterior upholstery were renewed (2024). Major maintenance including underwater paint, polishing and anodes (10/2025) has also been carried out.

The yacht currently has around 2,100 operating hours and is in very good condition, both technically and visually.



[MIJAX ON OUR WEBSITE](#)

EQUIPMENT

- Maintenance & condition
 - Major maintenance recently carried out
 - Underwater paint, polish, anodes, etc. new (10/2025)
 - Teak deck renewed
 - Interior and exterior upholstery new (2024)
 - Navigation system completely renewed (2025)
- Navigation & Technical Equipment
 - VHF radio with FM whip aerial
 - Glendinning Cablemaster shore power system
 - Inverter system with 220V supply
 - Twin Kohler generators (upgraded to 23 kW)
 - Engine room camera & saloon CCTV system
- Anchor System
 - Electric anchor windlass V4000 with Ultra Marine stainless steel anchor 60 kg (2024)
 - 90 m anchor chain (12 mm)
- SIMRAD Glass Cockpit Navigation System (new)
 - 1 × Simrad 24" multifunction display
 - 2 × Simrad 19" multifunction displays
 - 2 × Simrad NSX-12U multifunction displays (12")
 - 2 × Simrad IS42 instrument displays
 - Simrad HALO radar
 - Simrad AP44 autopilot controller
 - Simrad NAC-3 autopilot computer
 - Simrad GPS antenna
 - Simrad precision compass
 - 16" Simrad display in the galley, which allows you to easily monitor navigation, cameras and systems.
- Manoeuvring systems
 - Dockmate Yacht Control
 - Hydraulic bow thruster
 - Hydraulic stern thruster

EQUIPMENT

- Interior & Comfort
 - Electrically opening hardtop sunroof
 - High-quality interior finish in American Walnut
 - Full air-conditioning system (reverse cycle)
 - Spacious saloon with entertainment system
 - Separate crew cabin
 - Digital safe
 - Premium sprung mattresses in cabins
 - Spa bathroom in master cabin
 - Wooden floor heating in master area
- Accommodation
 - 4 guest cabins for up to 8 guests
 - Full-beam master cabin aft with en-suite bathroom
 - VIP cabin forward
 - Double guest cabin
 - Twin cabin (ideal for children or guests)
 - All cabins with private en-suite bathrooms
- Galley & Onboard Systems
 - Fully equipped galley with premium appliances
 - Dishwasher, stove, baking oven
 - Wash-dryer (new)
 - Watermaker system with commercial pre-filter & oil/water separator
 - Diesel FuelMag conditioning system
 - Electric oil change system
 - Additional 220V sockets throughout
 - Post Marine Water Heater 28 kW (2024)

EQUIPMENT

- Deck & Exterior
 - Hydraulic bathing platform (450 kg capacity)
 - Large hydraulic garage at the stern for a tender or jet ski
 - Retractable cleats for tender on platform
 - Teak deck on cockpit and bathing platform
 - Electric cockpit canopy
 - Tinted side windows and sliding doors
 - Underwater LED lights (Aqualluma – stern & sides)
 - Stainless steel stern docking flood lights
 - Large sunbathing areas fore and aft
 - Icemaker outside
 - Gaggenau grill (new)





MAIN DECK





COCKPIT





GALLEY





MASTER CABIN
& BATHROOM





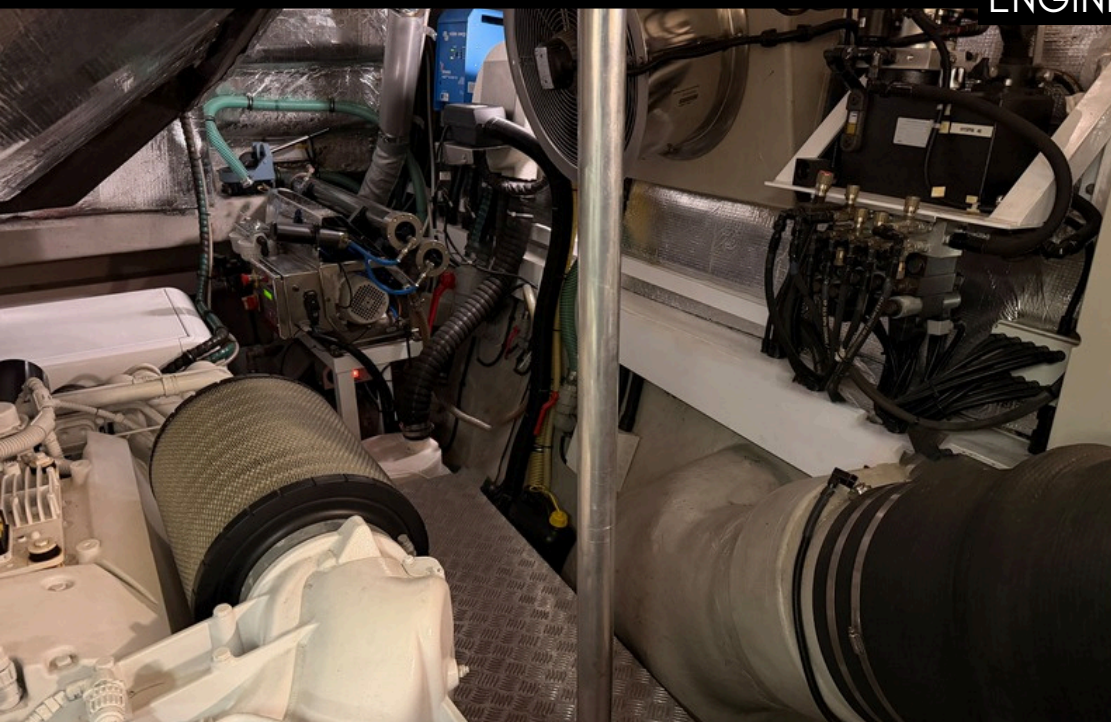
VIP CABIN &
BATHROOM

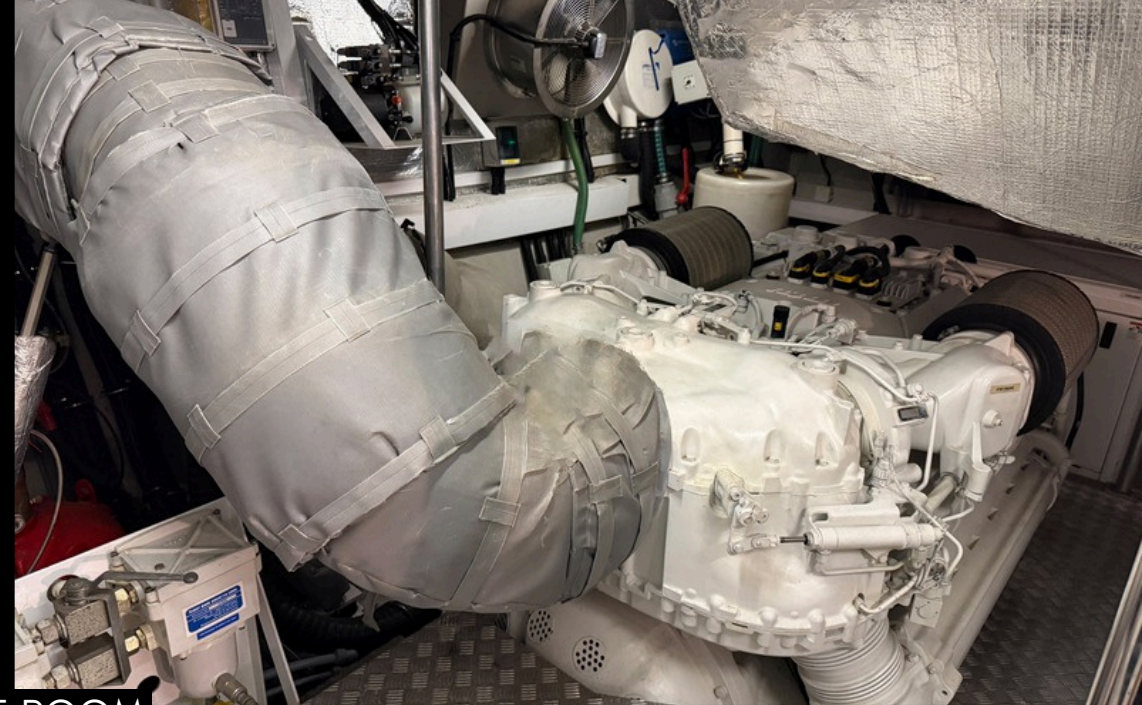






ENGINE ROOM





ENGINE ROOM

